

# NEX.U<sup>®</sup>

FLUID MANAGEMENT SYSTEM



**BOOST PRODUCTIVITY**  
**INCREASE EFFICIENCY**  
**REDUCE WASTE**



# LEADING THROUGH INNOVATION

## WHO?

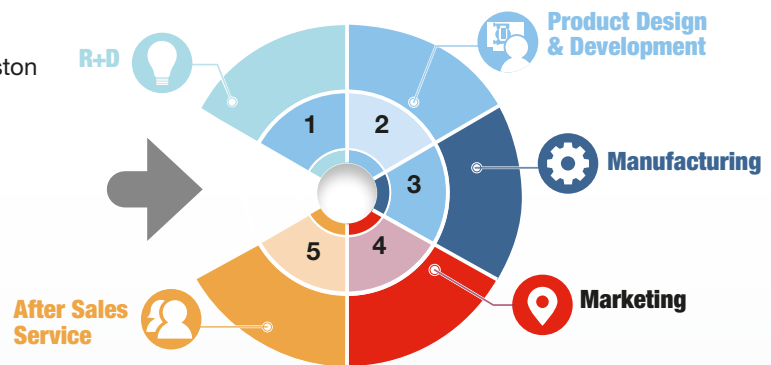
Since 1958, SAMOA Industrial is a privately owned leading European manufacturer of Pumps & Systems for complex fluids.

Our products are mainly used for lubrication, fluid processing (transferring, dispensing, and dosing), coating & paint treatments, and high viscosity fluid dispensing.

SAMOA designs, develops, and manufactures lubrication equipment, industrial air operated piston pumps, air operated double diaphragm pumps, spraying systems and extrusion units.

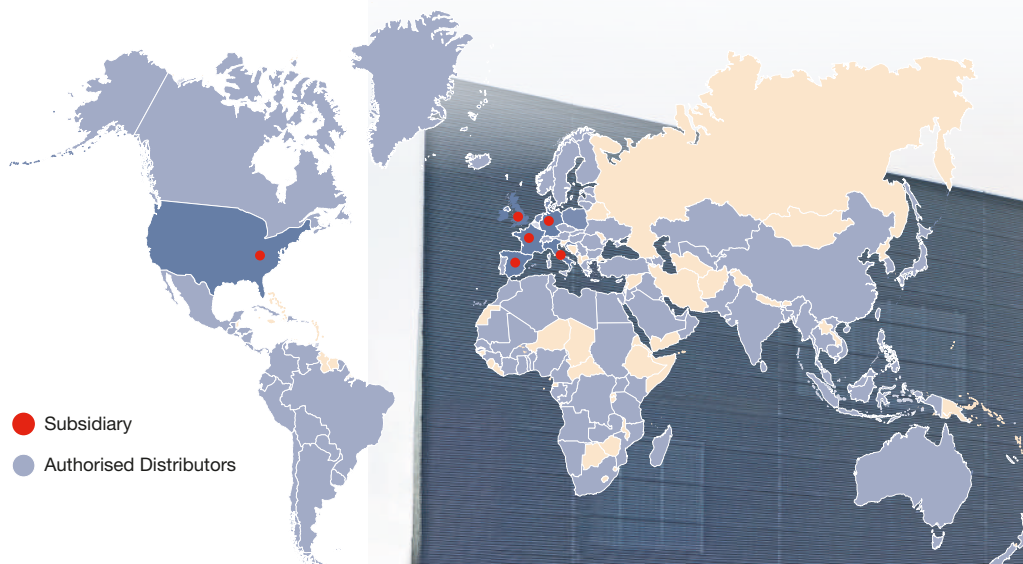
## WHY?

- Product Quality.
- Product Reliability.
- Product Efficiency.
- Environmental Concern.



## WHERE?

Present in 100 + Countries through our own subsidiaries and authorised distributors.



# SAMOA ELECTRONICS



In 1999 SAMOA acquired the French company A3B that designed and manufactured electronic fluid management systems for vehicle dealerships and workshops.

Since then, SAMOA has been developing new electronic systems and software to control, measure, and monitor pumps and bulk fluids. This new electronic systems, like NEX·U·, have been on the market since 2016.

Thanks to our R&D Electronics Department - consisting of software, electronics, and telecommunications engineers - and our clean room for electronic systems production, SAMOA ensures top quality products that increase productivity and reduces carbon footprint in your pumping processes.

**QUALITY**  
**EFFICIENCY**  
product

**RELIABILITY**

environmental  
**CONCERN**



Headquarters Offices and Technical Centre in Gijón (Spain)





# NEX·U·<sup>®</sup> BY SAMOA: Fluid management made easy

NEX·U·<sup>®</sup> HYBRID TECHNOLOGY offers wired and wireless advantages for increased productivity

## NEX·U·<sup>®</sup> WIRED INSTALLATION

- Reliable connection
- No battery issues
- Increased reliability and dependability

## NEX·U·<sup>®</sup> WIRELESS INSTALLATION

- Reduces installation cost avoiding long cable runs.
- Allows control of mobile dispensing units.
- Simpler installation, with less components

## KEEPING FLUID TRACK: Benefits of using a fluid management system



MONITOR



CONTROL



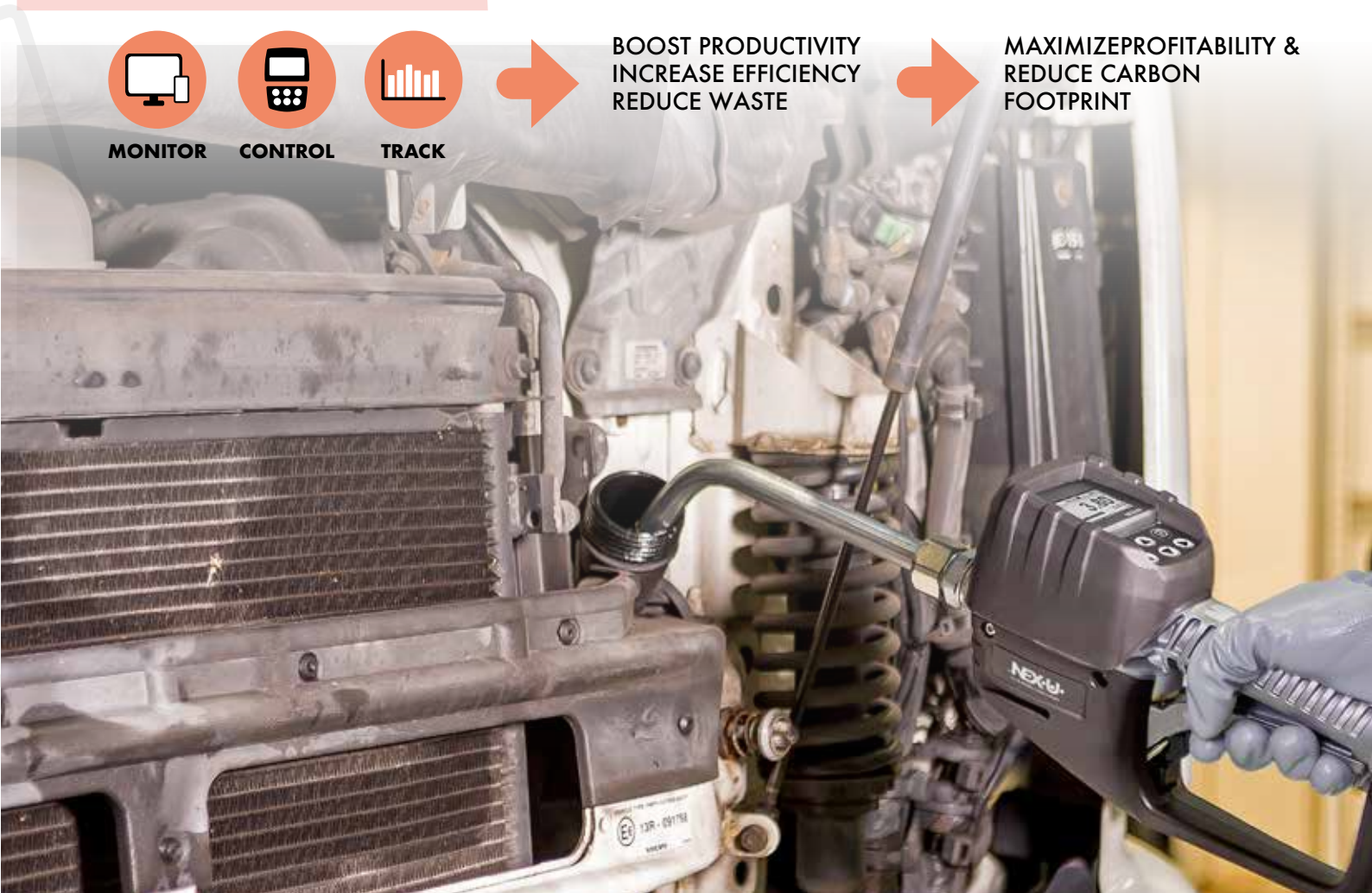
TRACK



BOOST PRODUCTIVITY  
INCREASE EFFICIENCY  
REDUCE WASTE



MAXIMIZE PROFITABILITY &  
REDUCE CARBON  
FOOTPRINT





# BENEFITS OF USING a Fluid Management System



## MONITOR

- Real time information about fluid transactions and inventory.
- Inventory management (refills schedule, warnings, etc.)
- Automatic alerts.

## CONTROL

- Reliable dispensing.
- Safety.
- Accuracy.

## TRACK

- Account for every drop of lubricant and other vehicle service fluids used.
- Reconcile fluid purchases and inventory with fluid sales and use.
- Supervise technician activity.
- DMS integration.

- **Increased reliability and full track of fluid transactions.**
- **Improved productivity.**
- **Accurate dispense.**
- **Reduced downtime costs.**
- **No tank stock-outs or spill-overs.**
- **No tank refill delays.**

LOST INVENTORY EQUALS LOST PROFIT. WITH TODAY'S HIGH OIL PRICES, INVENTORY CONTROL ELIMINATES THIS CONCERN.

## WHY NEX·U®?

### HYBRID TECHNOLOGY

The system can be installed as a fully wireless system or as a wired system. Possibility to control mobile units.

### DMS INTEGRATION

Optional API is available for integrations with 3rd party's DMS.

### EASY OPERATION

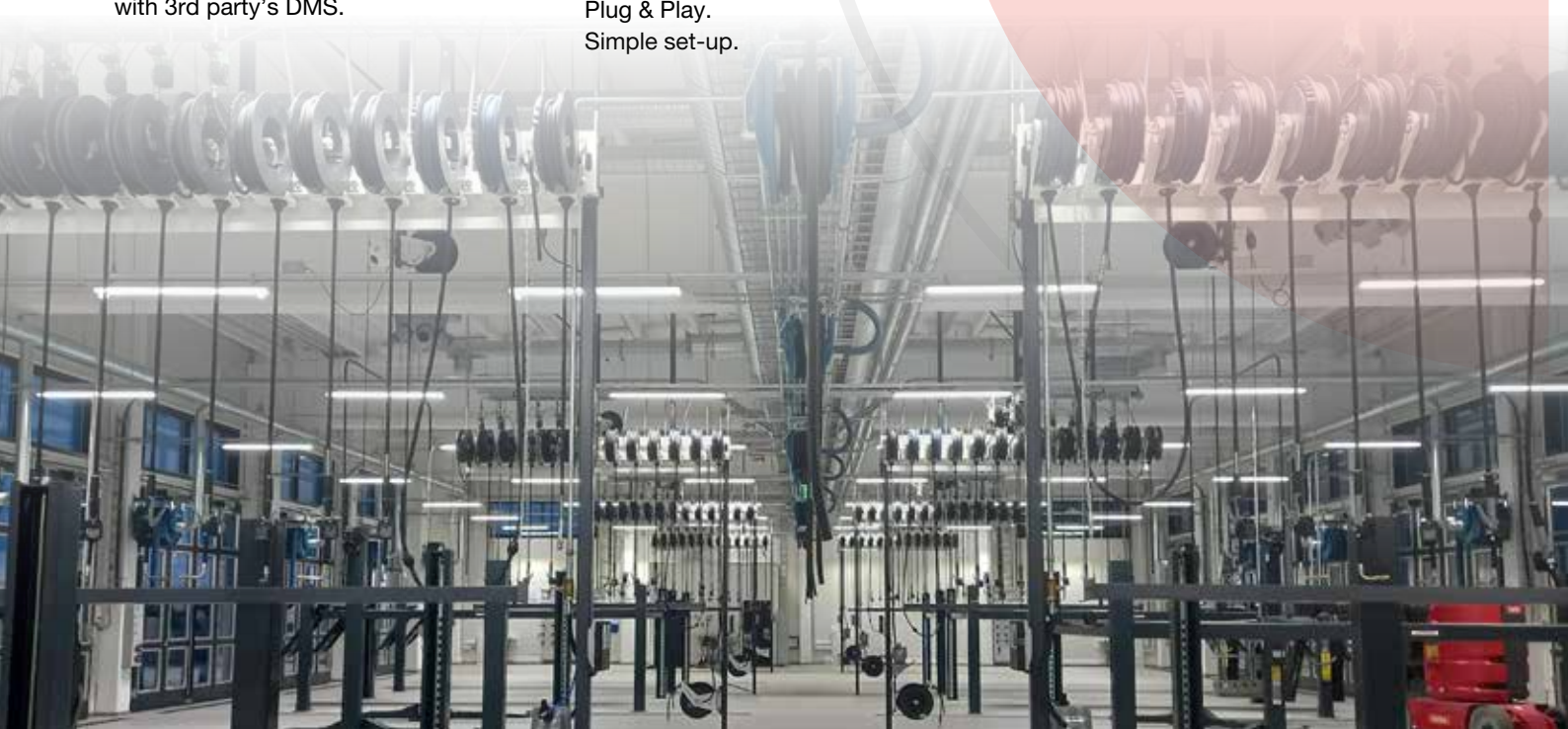
Quick and easy data entry.  
Reduced in order preparation time.  
Reduced downtime due to oil shortage.

### SIMPLE

Intuitive software.  
Plug & Play.  
Simple set-up.

### INCREASED PRODUCTIVITY

Keep control of service fluids.  
Control every transaction from the dispensing valve, without walking back and forth.



# DMS - DEALER MANAGEMENT SYSTEM

NEX·U<sup>®</sup> can interface with most popular DMS on the market, offering an efficient bidirectional communication between NEX·U<sup>®</sup> and DMS

## FEATURES

- Easy to use: quick and effective
- Enhanced security: work orders are checked and validated before fluid is dispensed.
- Automation: simplifies data entering as it can be automatically downloaded from the DMS.

**Ulink**



OR

**Udat**



OR

VIRTUAL KEYPAD



OR

**Uvision+**



Contact your SAMOA Distributor who will assist you with the license software you need.

U-NET SENDS DATA TO DMS



**U-net**



**DMS**

DMS CHECKS AND VALIDATES THE INFORMATION

## SAMOA INTERFACE

A bidirectional communication is established through web service. The user enters his PIN and the work order number.

DMS will prompt a message whether this information exists or not.

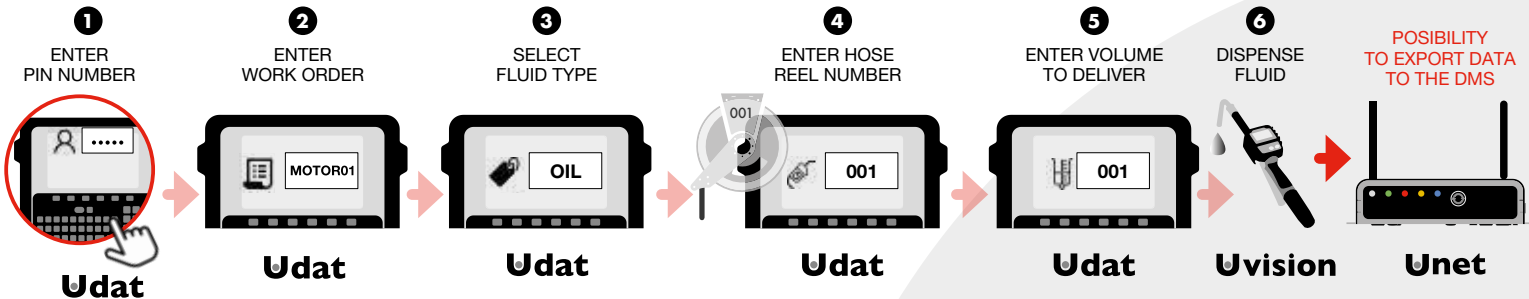
NEX·U<sup>®</sup> offers multiple dispensing modes depending on the customer needs.

# DISPENSING MODE OPTIONS

## 1.1

### STANDARD MODE USING U-DAT®

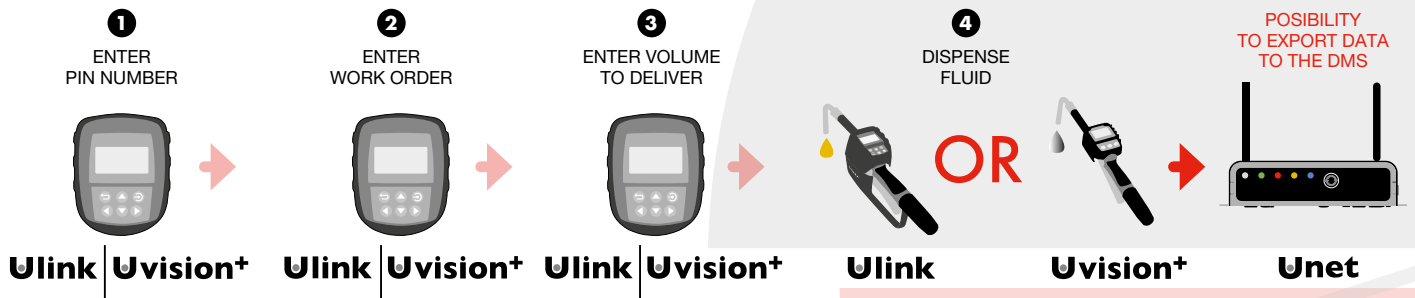
After entering PIN and work order number, the technician must select the type of fluid to be delivered, the hose reel number and enter the volume to deliver.



## 1.2

### STANDARD MODE USING U-LINK® | U-VISION+®

After entering their PIN and work order number, the technician must enter the volume to deliver.

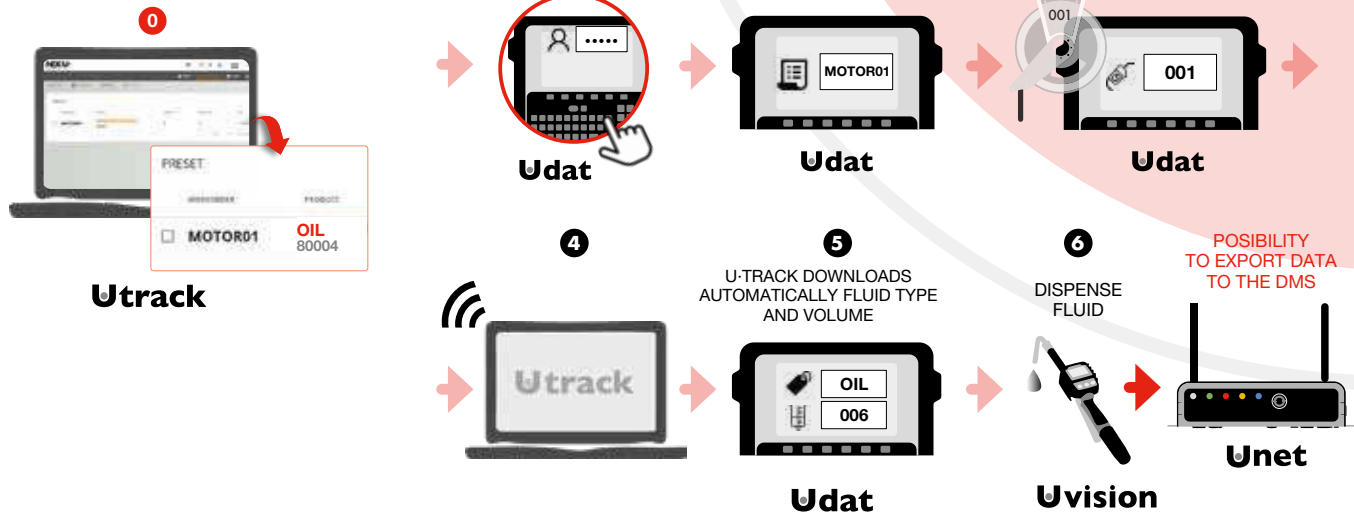


## 2.1

### PRESET MODE USING U-DAT®

A previous set up must be done in U-track before validation, as figure 0 shows. After entering the PIN, work orders and hose reel numbers, the system downloads the preset volume of the type of fluid associated to the work order entered.

THE SHOP MANAGER MUST PREVIOUSLY ENTER THE FLUID AND VOLUME ASSOCIATED TO EACH ORDER NUMBER.





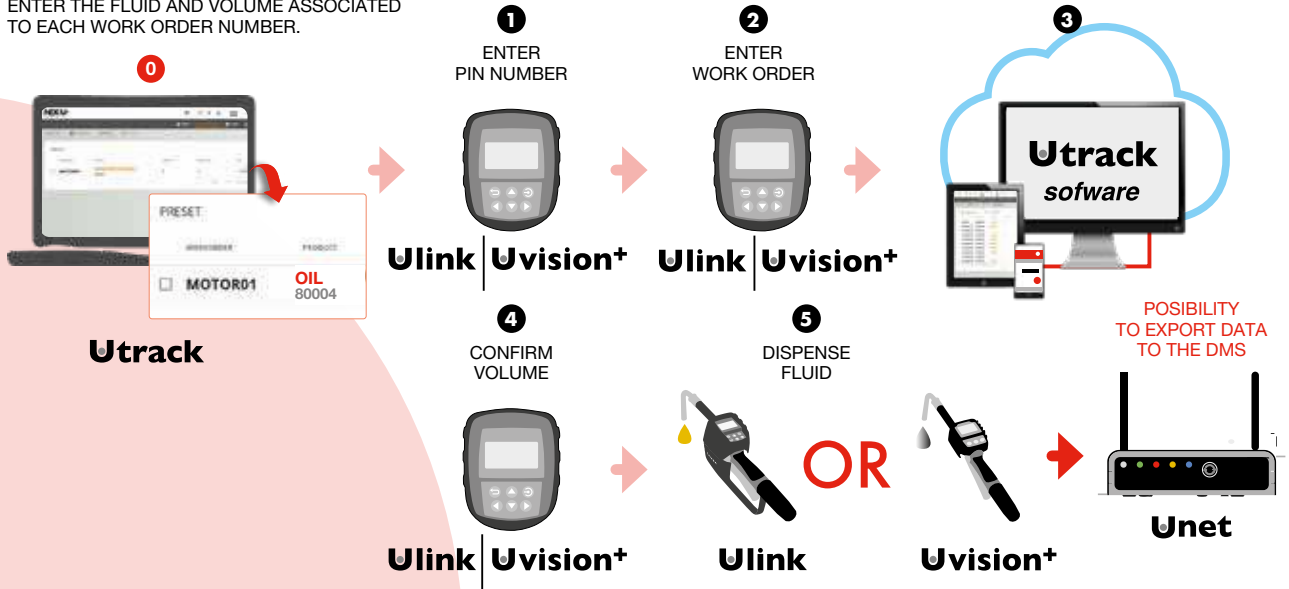
# DISPENSING MODE OPTIONS

## 2.2

### PRESET MODE USING U-LINK | U-VISION+

A previous set up must be done in U-track before validation, as figure 0 shows. After entering the PIN, the technician can scroll the existing work orders, and select the desired one. NEX·U® downloads the preset volume associated with the work order selected.

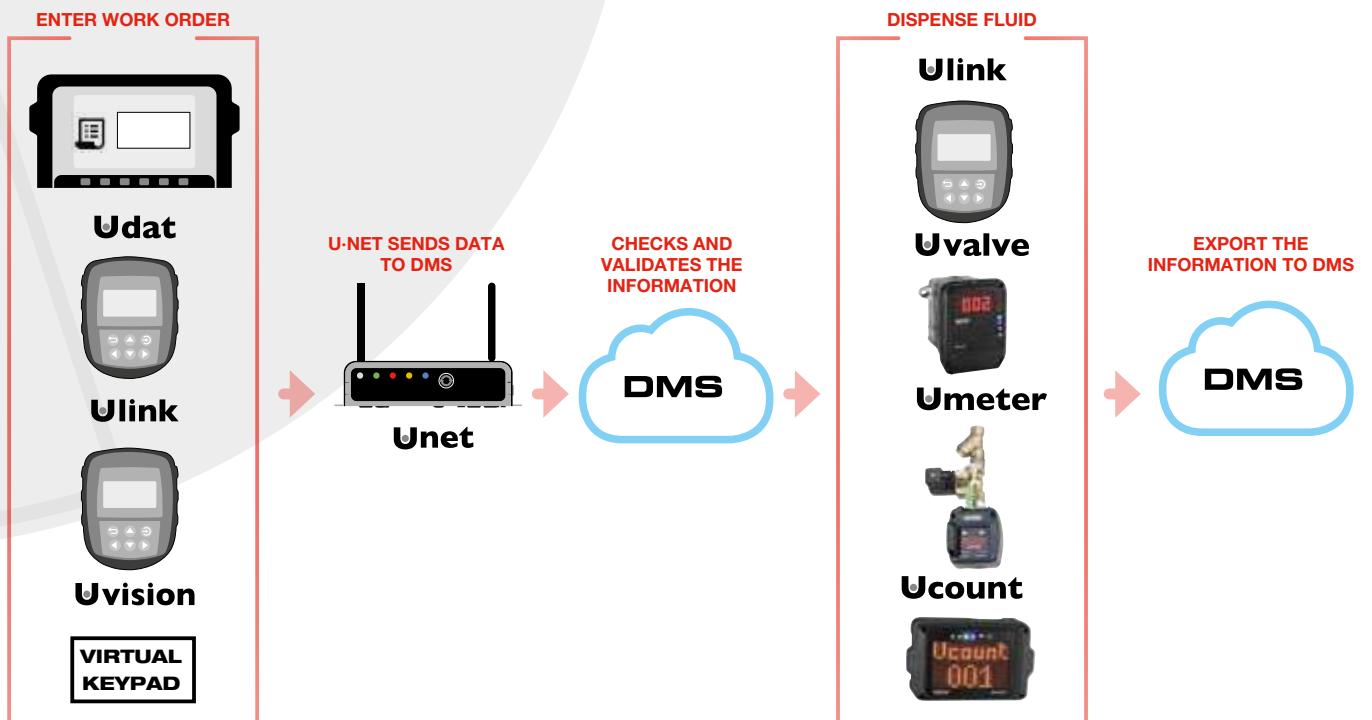
THE SHOP MANAGER MUST PREVIOUSLY ENTER THE FLUID AND VOLUME ASSOCIATED TO EACH WORK ORDER NUMBER.



## 3

### DMS - INTEGRATED MODE USING U-DAT, U-LINK, U-VISION+, VIRTUAL KEYPAD

From any device connected to the same network as the U-net, the user can launch the transaction, even through DMS integration, and then start it using U-dat, U-link or U-vision+



# U·TRACK: NEX·U.® SOFTWARE

## Utrack



U-track system is a web based application accessible through any device (Laptop, PC, tablet or cell phone) connected to the same network as U-net.

A Virtual Keypad license converts any device connected to NEX·U.® into a virtual system access keypad for authorising fluid dispense.

U-track dashboard screen provides, in a glance, information on oil inventory and oil usage. Just click on any tank for more information.

Transactions can be followed and monitored real time, if required. Thanks to U-track, each PC terminal or tablet connected to the same network used by NEX·U.® is converted into an access keypad to the NEX·U.® system (additional Virtual Keypad licenses are required). U-track can also generate different reports that can be exported easily into CSV format.

### ORDERING INFORMATION

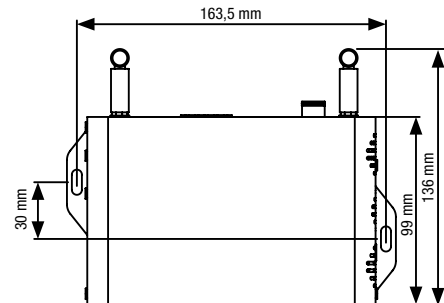
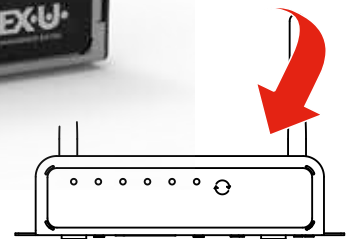
Part No.	Description
383 305	U-net central processing unit. Includes U-track software.
383 650	Virtual Keypad license. Converts any terminal (PC, laptop, tablet or smart-phone) into a NEX·U.® access keypad. Contact SAMOA for further information regarding the Virtual Keypad license.

# U·NET: NEX·U·® SYSTEM CENTRAL PROCESSING UNIT

U-net includes a powerful 2.4 GHz processor and 4 GB RAM. It controls the system functions and it manages the wired and wireless communication among the NEX·U·® components.

It has two CAN BUS ports (in/out) for wired communications with other NEX·U·® components and an Ethernet port that allows U-net to connect to the LAN. It also deploys a dedicated radio frequency network for communication with U-link wireless metered dispense valves.

## U·net



### U·net specifications:

- Intel 2,4 GHz processor
- 4 GB RAM memory
- 64 GB storage capacity
- One Ethernet connection, one HDMI, four USB and two CAN BUS communication ports and Radiofrequency emitter
- 110-240V AC - 5V DC transformer included

### U·NET ALSO INCLUDES THE U·TRACK SOFTWARE

U-track is a powerful web based software package that gives you full control of fluid usage and inventory. It is a web based software that allows multi-user applications. All PCs or tablets in the same network and in the same location can have access to U-track. U-track can work using web browser. Compatible with: Chrome, Firefox, Microsoft Edge.

### THANKS TO U·TRACK YOU WILL BE ABLE TO:

- Simple and intuitive system set-up.
- Simplified system maintenance (manage users, fluid inventory, etc.)
- Manage all the system hard-wired and wireless communication.
- Generate a wide variety of reports, which can be easily exported to csv and txt formats.
- Transform any PC terminal in the workshop into a NEX·U·® Virtual Keypad (license required).

### U·TRACK ALSO CONTRIBUTES TO INCREASE YOUR OPERATIONS EFFICIENCY AND PROFITABILITY:

- Keeps control of every fluid drop dispensed in the system.
- Improves inventory accuracy, generating automatic warnings and email notifications for reorders at critical predefined inventory levels.
- Generates a variety of reports, to help you track dispense information such as date and time, technician, work order, fluid dispensed, volume delivered, etc.



# SYSTEM ACCESS AND CONTROL

NEX·U® adapts to the way you work offering multiple possibilities for accessing the system

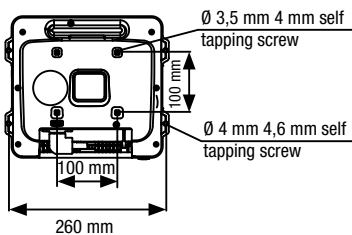
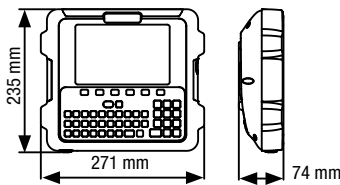
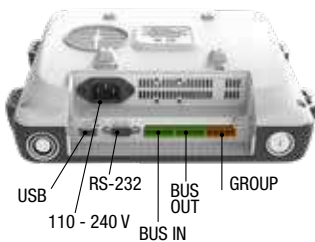


## Udat Udat power+

**U-DAT ALLOWS SYSTEM ACCESS TO TECHNICIANS EITHER THROUGH A PIN CODE OR USING A RFID CARD**

- U-dat includes a 7" full colour graphics display and a complete QWERTY keypad.
- U-dat supports CAN BUS cable communications that transmits data and power to open the solenoid valves in the system. "Plug-and-play" connectors make cabling easy.
- U-dat power includes the transformer required to simultaneously open up to 8 solenoid valves.
- U-dat requires 110 - 240 V 50/60 Hz power supply.
- Optional Bluetooth® printer (see accessories).

### U-DAT ACCESS KEYPAD



### U-DAT CONNECTION PANEL

All wired connections can be quickly and easily done without opening the U-dat. It is possible to connect a printer, an external RFID reader, or a QR reader to the RS-232 port.

#### U-DAT

110 - 240 V AC  
CAN BUS in/out

#### ORDERING INFORMATION

Part No.	Description
<b>383 000</b>	U-dat power+ Keypad NEX·U® access keypad with 7" colour screen and QWERTY Keypad. One USB, one RS232 and in/out CAN BUS ports. 110 - 240 V AC 50/60 Hz, with a 320 W transformer to open 8 solenoid valves, supports CAN BUS communications.
<b>383 020</b>	U-dat Keypad Same as above, but with a 75 W transformer, to open 2 solenoid valves.
<b>383 915</b>	Universal VESA 100 bracket
<b>953001</b>	Power cable C13EU2M

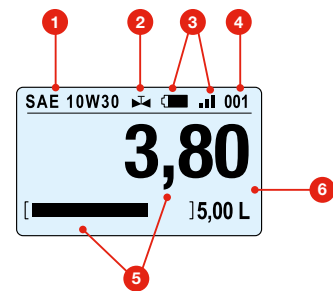
# U·VISION<sup>+</sup>: HAND-HELD DISPLAY AND KEYPAD MODULE

U·vision<sup>+</sup> includes a six-button keypad and it can replace the U·dat Keypad for data entry in the system as it allows the following operations:

- User access through PIN entry.
- Scroll through existing open job orders to select the one corresponding to each operation or enter the job order number (can do alphanumeric).
- Enter the volume of fluid to be dispensed.
- Confirm fluid type and transaction.

U·vision<sup>+</sup> has a backlight display connected using Bluetooth<sup>®</sup> with a U·valve, U·meter<sup>+</sup> or U·count and it displays the following parameters:  
U·vision<sup>+</sup> is powered with 4 "AA" 1.5 V alkaline batteries.

## Uvision<sup>+</sup>



- 1 Fluid dispensed type.
- 2 Solenoid valve open or closed.
- 3 Battery life and Bluetooth<sup>®</sup> signal.
- 4 Hose reel / fluid outlet number.
- 5 Volume delivered and operation progress.
- 6 Preset volume.

Two possible dispensing modes: Standard and Preset



Four scroll / navigation buttons

Enter button



Enter technician PIN number

STANDARD MODE



Enter / select job order number



Enter volume to deliver

PRESET MODE



Select job number

U·vision<sup>+</sup> adapts to any SAMOA 1/2" fluid control handle and transforms the handle into a hand-held display and keypad for access to the NEX·U.<sup>®</sup> system.

### ORDERING INFORMATION

Part No.	Description
383 401	U·vision <sup>+</sup> hand-held keypad and display module. (Oil gun not included).

# U·LINK: WIRELESS DISPENSING METER VALVE

**Ulink**

- Dispensing Meter Valve with wireless communication
- Includes hand-held System Access Keypad that allows full transaction control.

**Increased durability**  
Protective TPE shroud.

**Easy and intuitive operation**  
6-key integrated keypad with large LCD screen.

**Light and Robust**  
Aluminium die cast for longer life and lighter weight.

**Heavy Duty inlet swivel with inlet filter**  
1/2" High flow inlet swivel with protective TPE swivel boot.

**Reliable valve operation**  
Valve automatically shuts off once the delivered flow reaches the preset volume.

**Easy to replace batteries**  
Four AA standard alkaline batteries provide the power required for an effective valve operation.

**Easy to operate**  
Four finger trigger for increased user comfort.



**Product Name**

**Qty Dispensed**  
**Required Qty**

**Back / Cancel Button**

**Set Button**

**Control / Insert Scroll**





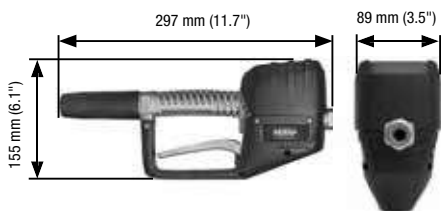
**TECHNICAL SPECIFICATIONS**

<b>Fluids handled</b>	Motor oil, Hydraulic oil, Anti-freeze, Gear oil, Automatic transmission fluid
<b>Flow range</b>	1 to 30 l/min (0.25 to 7.5 gal/min)
<b>Maximum working pressure</b>	100 bar (1,425 psi)
<b>Accuracy</b>	± 0.5 % (Oil); ± 1 % (Coolant solutions)
<b>Inlet</b>	1/2" BSP (F)
<b>Outlet</b>	1/2" BSP (F)
<b>Working temperature range</b>	-10 °C to 50 °C (14 °F to 122 °F)
<b>Battery</b>	4 x "AA" Alkaline 1.5V
<b>Viscosity Range</b>	Up to 2000 mPa.s
<b>Display</b>	LCD
<b>Wetted parts</b>	Aluminium, AISI 316 Stainless Steel, Buna-N, Delrin, Brass, Zinc plated steel
<b>Weight (with no outlet)</b>	4,6 lb (2,1 kg)

Category	Specification
<b>Regulatory Approvals</b>	FCC (EEUU), ETSI (Europe), IC (Canada), KCC (Korea), TELECK (Japan), RCM (Australia), Anatel (Brazil)
<b>Frequency band</b>	ISM 2.4 GHz, DSSS (Direct Sequence Spread Spectrum)
<b>Protocol</b>	Wireless Radio Frequency communication
<b>Encryption</b>	128/256 bit AES

**ORDERING INFORMATION**

Part No.	Description
<b>383 405</b>	U-link, no outlet
<b>383 406</b>	U-link, with 60° rigid outlet and 1/4 turn non-drip tip
<b>383 407</b>	U-link, with 90° flexible outlet and 1/4 turn non-drip tip



# VOLUME METERS

## U-VALVE: COMPACT UNIT OF PULSE METER, SOLENOID VALVE, FILTER AND COMMUNICATIONS

# Uvalve

U-Valve is a compact unit that combines a high accuracy pulse meter, a solenoid valve and a large, cleanable fluid screen filter with an electronic module. The electronic module controls the meter and valve operation, and the communication with other system components.



- Reduces installation time. Less leak points than separate components.
- Large, highly visible LED display shows system number assigned and operation.
- Four coloured LED lights show operation for diagnosis. Two buttons for system configuration.
- Supports CAN BUS cable communication, transmits data and electric power to open the solenoid valve.
- Bluetooth® connection to a U-vision/ U-vision+ fluid handle with display.
- U-valve requires 24 V DC supplied by U-dat or U-power module.

## Uconnect

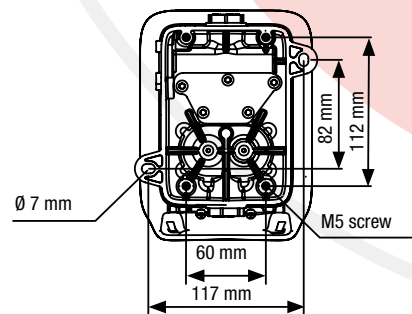
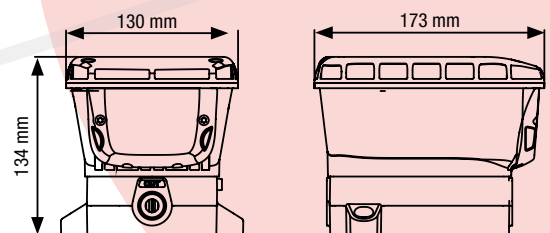
U-valve can connect to the WiFi® network using U-connect



### PRODUCT SPECIFICATIONS

<b>Applications</b>	Lubricants, antifreeze solutions*
<b>Wetted parts</b>	Aluminium, NBR, stainless steel, acetate
<b>Connection threads</b>	1/2" BSP (F)
<b>Flow range</b>	1 - 30 l/min
<b>Pulses per litre</b>	328 ppl
<b>Accuracy</b>	+/- 0,5 %
<b>Max. working pressure</b>	100 bar
<b>Solenoid valve</b>	24 V DC
<b>Communication</b>	CAN BUS, Bluetooth®

\* If fluid additives are used, it is recommended to install stainless steel pulse meter and stainless steel solenoid valve.



U-valve and U-valve+ wired connections use fast connection in/out CAN BUS terminals.

U-valve cable connectors are not included (see accessories).

### ORDERING INFORMATION

Part No.	Application
383 501	U-valve meter, solenoid valve and electronic module. Includes Bluetooth® communication for connecting to a U-vision or U-vision+.

# U-meter U-meter+

High accuracy, compact pulse meter including the electronic module required to control the meter, the solenoid valve operation and the communication with other system components through CAN BUS.



**Wireless Module Kit  
(Part No. 381 909)  
available to convert  
U-Meter to U-Meter+**

U-meter+ includes Bluetooth® for connecting to a U-vision or U-vision+.

U-meter Part No.	381 513	383 525	383 522	383 520
<b>Wetted parts</b>	Aluminium, NBR, stainless steel, acetal	Aluminium, NBR, stainless steel, acetal	PVC, Vectra®, stainless steel, Viton®	Stainless steel, Vectra®, Viton®
<b>Applications</b>	Lubricants	Lubricants, diesel	DEF/AdBlue®, windshield wash and antifreeze solutions (low pressure)	DEF/AdBlue®, windshield wash and antifreeze solutions (high pressure)
<b>Connection threads</b>	1/2" BSP (F)	3/4" BSP (F)	1/2" BSP (F)	1/2" BSP (F)
<b>Flow range</b>	1 - 30 l/min	8 - 80 l/min	1 - 50 l/min	1 - 50 l/min
<b>Pulses per litre</b>	328 ppl	109 ppl	320 ppl	320 ppl
<b>Accuracy</b>	+/- 0,5 %	+/- 0,5 %	+/- 0,5%	+/- 0,5%
<b>Maximum working pressure</b>	100 bar	100 bar	30 bar	100 bar
<b>Communications</b>	CAN BUS	CAN BUS	CAN BUS	CAN BUS
<b>U-meter+, models with Bluetooth® Part No.</b>	<b>383 514</b>	-	<b>383 523</b>	<b>383 521</b>

Only for connection with U-dat, U-valve, or an adjacent U-meter. Requires a 24 V DC solenoid valve.

## U-METER AND SOLENOID VALVE KITS

U-METER AND SOLENOID VALVE KITS INCLUDE A HIGH PRECISION U-METER OR U-METER+ METER, A SOLENOID VALVE AND A Y-STRAINER.

Part No.	Application	Pulse meter	Y-strainer	Solenoid valve
<b>383 550</b>	Lubricants, antifreeze solutions	U-meter 381 513	950 372	389 001 <sup>(1)</sup>
<b>383 551</b>	Lubricants, antifreeze solutions	U-meter+ 383 514	950 372	389 001
<b>383 552</b>	High delivery lubricants, antifreeze solutions	U-meter 383 525	950 373	389 002
<b>383 553</b>	High delivery lubricants, antifreeze solutions	U-meter+ 383 526	950 373	389 002
<b>383 554</b>	Diesel fuel	U-meter 383 525	950 374	389 002
<b>383 556</b>	DEF / AdBlue®, windshield wash (low pressure)	U-meter 383 522	950 372	389 004
<b>383 557</b>	DEF / AdBlue®, windshield wash (low pressure)	U-meter+ 383 523	950 372	389 004

NEX-U® requires 24 V DC, normally closed except for overfill (normally open) solenoid valves to operate. U-valve and U-valve+ include a solenoid valve. For other metering elements, a solenoid valve compatible with the fluid and the application requirements must be used.



Part No.	Application and wetted materials	Connection threads	Voltage	Type	Max. Working pressure
<b>389 001*</b>	Oil and antifreeze solutions. Brass and NBR	1/2" BSP (F)	24 V DC	N.C.	50 bar
<b>389 002</b>	Coolant, diesel, water, oil. Brass and NBR	1/2" BSP (F) High Flow	24 V DC	N.C.	50 bar
<b>389 004</b>	DEF / AdBlue®; antifreeze and windshield wash solutions, stainless steel and EPDM	1/2" BSP (F)	24 V DC	N.C.	10 bar
<b>389 021</b>	Electro-pneumatic valve U-tank. Prevents over fill of waste fluid tanks. Brass and NBR	1-1/2" BSP (FF) for fluids 1/4" BSP (FF) for air	24 V DC and 1-4 bar compressed air	N.O.	10 bar

N.C.= Normally closed. / N.O.= Normally open.

\* For use in standard delivery applications, with a 1/2" U-meter.



# NEX·U·<sup>®</sup> REMOTE DISPLAYS

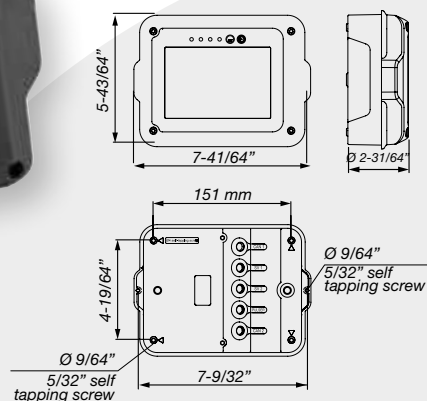
## Ucount

U-count allows the use of any pulse meter and solenoid valve in the NEX·U·<sup>®</sup> system. U-count control module includes a high visibility LED display and the software required to communicate with the rest of the NEX·U·<sup>®</sup> system components.

U-count support CAN BUS hard wired cabling to transmit power, required to open the solenoid valve, and data, for communication with other system components. It can also communicate with a U-vision or U-vision+ using Bluetooth<sup>®</sup>.



U-COUNT DIMENSIONS



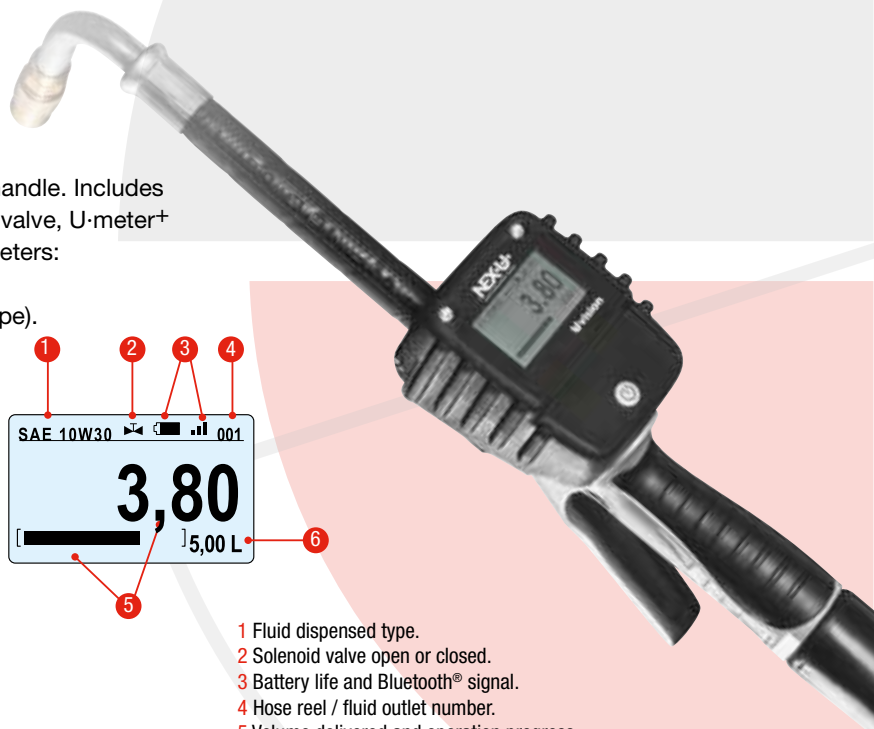
## Uvision

Hand-held display module to fit a SAMOA oil control handle. Includes a backlight display connected via Bluetooth<sup>®</sup> with a U-valve, U-meter+ or U-count module and it displays the following parameters:

- Hose reel (fluid outlet number and fluid dispensed type).
- Battery life and Bluetooth<sup>®</sup> signal strength.
- Volume delivered and operation progress.
- Solenoid valve open or closed.

### ORDERING INFORMATION

Part No.	Description
383 400	U-vision hand-held display module. (Outlet and handle not included).



- 1 Fluid dispensed type.
- 2 Solenoid valve open or closed.
- 3 Battery life and Bluetooth<sup>®</sup> signal.
- 4 Hose reel / fluid outlet number.
- 5 Volume delivered and operation progress.
- 6 Preset Volume.

## Uview



Remote, high visibility, LED display that shows the volume delivered through various U-valves (no simultaneous operation supported). U-view supports and no hyphen hardwired communication. U-view requires no hyphen hardwired connection (data and power) to a U-dat Keypad or to a 110 - 240 V AC power supply using a 24 V DC (U-power or U-power+).

### ORDERING INFORMATION

Part No.	Description
383 700	U-view remote display module

# NEX·U.® CONNECTABILITY ACCESSORIES

## U·power



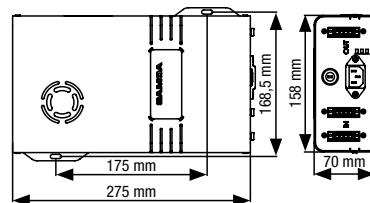
383 150 - 383 151

## U·power+



383 152

Power supply to solenoid valves and other system components. U·power connects using CAN BUS cable to a U·valve, U·valve+, U·meter, U·meter+ or U·count whenever the power supplied by a U·dat Keypad is not present.



### ORDERING INFORMATION

Part No.	Description
383 151	U·power. Power supply unit with a 75 W transformer for use with 2 solenoid valves.
383 150	U·power+. Power supply unit with a 320 W transformer for use with 8 solenoid valves with 2 CAN BUS connectors.
383 152	U·power+. Power supply unit with a 320 W transformer for use with 8 solenoid valves with 3 CAN BUS connectors (1 IN and 2 OUT).

## ((☎)) RF NETWORK EXTENDER

### ORDERING INFORMATION

Part No.	Description
383 211	Expands the NEX·U.® Radio Frequency network coverage to reach remote areas.
383 212	1 m cable, UK plug connection
383 213	1 m cable, US, Japan plug connection
383 214	1 m cable Australia, China plug connection
383 215	1 m cable EU plug connection



383 211

## U·connect

## CANBUS TO WI-FI® CONVERTER



383 210

### ORDERING INFORMATION

Part No.	Description
383 210	U·connect allows wireless communication among the different components instead of CAN BUS wired communication. Equipped with an external antenna, it allows for extended WiFi® signal coverage.

# U·TANK: TANK LEVEL MONITOR MODULE AND PUMP CONTROLLER

Provides real-time inventory control, reducing concerns about inventory shortage or used fluid tanks overflow

**U**tank

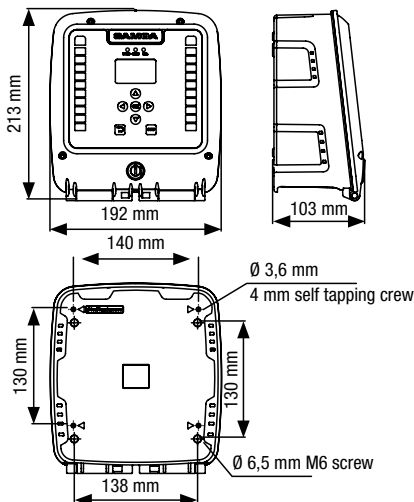


## Tank Monitoring

It is a monitor module capable of controlling two tanks using digital or analog level gauges. Can be connected to solenoid valves, to control pump operation, and to external warning devices.

U-tank communicates with other NEX·U·® components using CAN BUS wired connection or WiFi® wireless connection (requires U-connect).

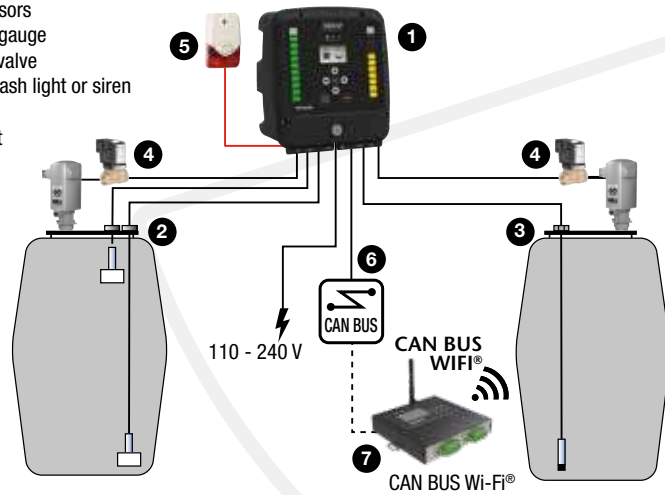
U-tank has two independent graphic displays and level bars. Each of them shows the inventory available in each tank. It also has a set-up keypad for inventory adjustment if required. <sup>(1)</sup>



## INPUT AND OUTPUT PORTS

- One analog input per tank for a pressure probe with 4-20 mA or 0-10 V interface.
- Three digital inputs per tank for a low, intermediate or high-level probe <sup>(1)</sup>.
- One output per tank for a solenoid valve to control air supply to each pump.
- One output per tank for an electro-pneumatic valve to prevent tank overflow.
- One output per tank for controlling a flash warning light or an acoustic alarm. U-tank supports CAN BUS wired communication with other NEX·U·® system components. It requires a 110 - 240 V AC supply.
- One common output for controlling an air solenoid valve to stop the air supply to all pumps when the workshop is closed.

- 1 U-tank
- 2 Level sensors
- 3 Pressure gauge
- 4 Solenoid valve
- 5 Remote flash light or siren
- 6 CAN BUS
- 7 U-connect



## ORDERING INFORMATION

Part No.	Description
383 100	U-tank tank monitoring module. Can control up to two tanks. Supports CAN BUS communications. 110 - 240 V

<sup>(1)</sup> The use of digital probes does not allow real-time inventory monitoring. NEX·U·® will use declining balance for inventory control and will require manual inventory adjustment when fluid is supplied to the tank.



# NEX·U·<sup>®</sup> COMPACT

NEX·U·<sup>®</sup> also offers solutions to smaller workshops where web based software is not needed. NEX·U·<sup>®</sup> COMPACT is a simple system based in a special U·dat Keypad that is able to control a maximum of 8 dispensing points.

The Keypad includes a 7" colour screen and the simplified software included provides workshops with:

- Full control of bulk stored fluid usage.
- Inventory control using declining balance method. NEX·U·<sup>®</sup> COMPACT will give a warning signal once a certain inventory is reached, and restricts access to those outlets that have run out of inventory.
- Ability to generate full reports in CSV format that can provide useful management information.
- Does not support U·Link oil dispensing meter or U·vision<sup>+</sup>.



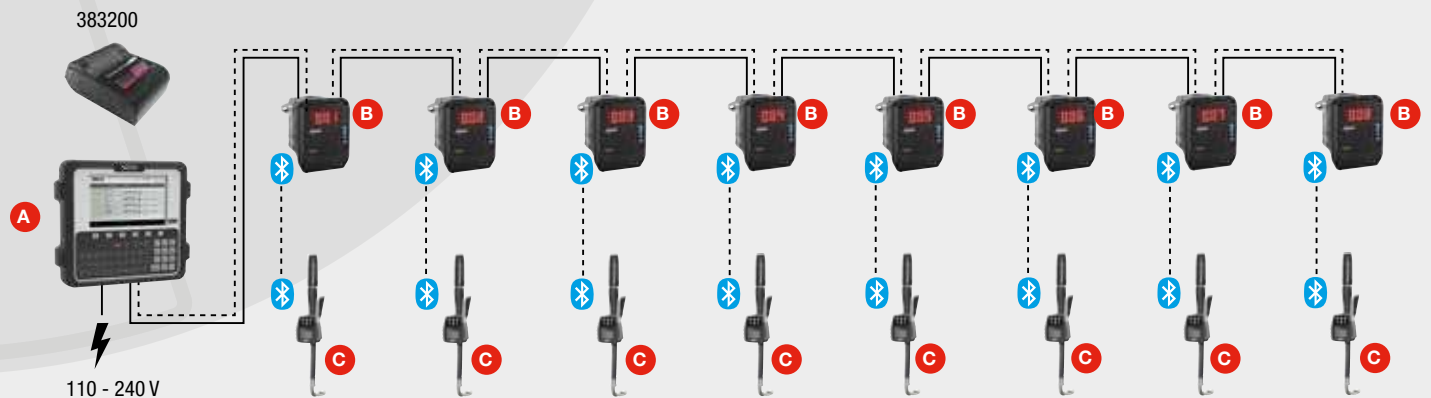
NEX·U·<sup>®</sup> COMPACT can work with any NEX·U·<sup>®</sup> fluid meter: U·valve; U·meter or U·meter<sup>+</sup> with solenoid valve and filter. A U·vision hand held display can be connected to each U·valve or U·meter<sup>+</sup>.

NEX·U·<sup>®</sup> COMPACT has 64 GB storage capacity that provides virtually an unlimited capacity for storing transactions. NEX·U·<sup>®</sup> can be configured from a computer connected to the same Wi-Fi network as the NEX·U·<sup>®</sup>.

New Wi-Fi<sup>®</sup> functionalities.

## ORDERING INFORMATION

Part No.	Description
383 001	NEX·U· <sup>®</sup> COMPACT 75. With a 75 W transformer for opening up to 2 solenoid valves.
383 013	NEX·U· <sup>®</sup> COMPACT 320. With a 320 W transformer for opening up to 8 solenoid valves.



NEX·U·<sup>®</sup> COMPACT keypad **A** can control 8 dispensing points (model with 320 W transformer) or 2 dispense point (model with 75 W transformer). Each dispensing point **B** can include a U·valve, a U·meter or U·meter<sup>+</sup> with solenoid valve combination.

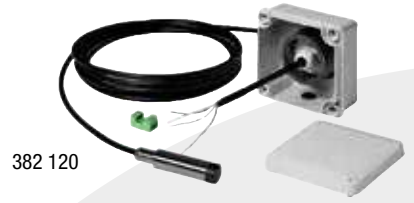
A U·vision hand held display **C** can be connected to each fluid outlet using Bluetooth<sup>®</sup> communications.

It is possible to include a Bluetooth printer to provide a ticket for the transactions.

# NEX·U·® ACCESSORIES

## TANK MONITORING ACCESSORIES

Part No.	Description
382 120	Tank level pressure gauge. Allows real-time monitoring of the volume in a tank. Maximum tank height: 4 m (11,5') taller tanks by special order



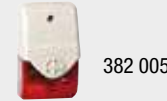
382 120

Part No.	Description
382 201	Float switch digital level gauge. Detects minimum, intermediate or maximum volume in a tank. Does not allow real-time monitoring. Adjustable height, includes 5 m (16,4') cable



382 201

Part No.	Description
382 005	Remote flash and acoustic alarm

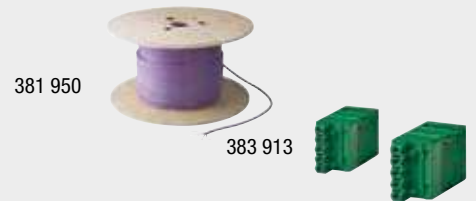


382 005

## CABLE

3082A 15/18AWG COMMUNICATION AND POWER CAN BUS CABLE

Part No.	Description
381 950	CAN BUS communication cable, sold in 1 m (3') increments
383 913	Cable connectors kit
381 908	In/out electrical connectors. For use with U-meter, U-meter+.



381 950

383 913

## SOLENOID VALVES FOR COMPRESSED AIR - PUMP CONTROL

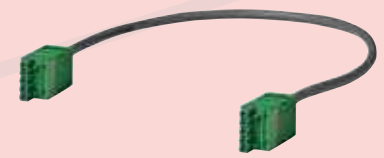
Part No.	Application and wetted materials	Connection threads	Voltage	Type	Max. Working pressure
389 016	Compressed air. Brass and NBR	3/8" (F)	24 V AC	N.C.*	10 bar
389 013	Compressed air. Brass and NBR	1/2" (F)	24 V AC	N.C.*	10 bar

\* N.C.= Normally closed. / N.O.= Normally open.



389 013

Part No.	Description
381 957	Jumper cable. 0,5 m cable with prewired connectors 381 908 for connecting adjacent elements with a CAN BUS cable.
383 957	Jumper cable. 1 m cable with prewired connectors 381 908 for connecting adjacent elements with a CAN BUS cable.



381 957

## BLUETOOTH PRINTER

Part No.	Description
383 200	Optional printer for use with NEX·U·® COMPACT, and NEX·U·® U-dat connected via Bluetooth® to the U-dat.



381 908

383 200

## BAR CODE READER

Part No.	Description
383 901	Bar code laser reader. Reads any QR code. For use with a U-dat, U-dat Power+ and U-dat for NEX·U·® mobile and compact systems.



383 901

## U-VALVE BRACKETS

Part No.	Description
383 911	Allows fixing up to 6 U-valve on top of a hose reel stand (360 160).



383 911

## KEYPAD BRACKETS

Part No.	Description
383 915	Universal VESA100 bracket.



383 915

## POWER CABLES

Part No.	Description
953 001	Power cable U-dat C13 214 EU
953 006	Power cable U-power C13 EU 2M

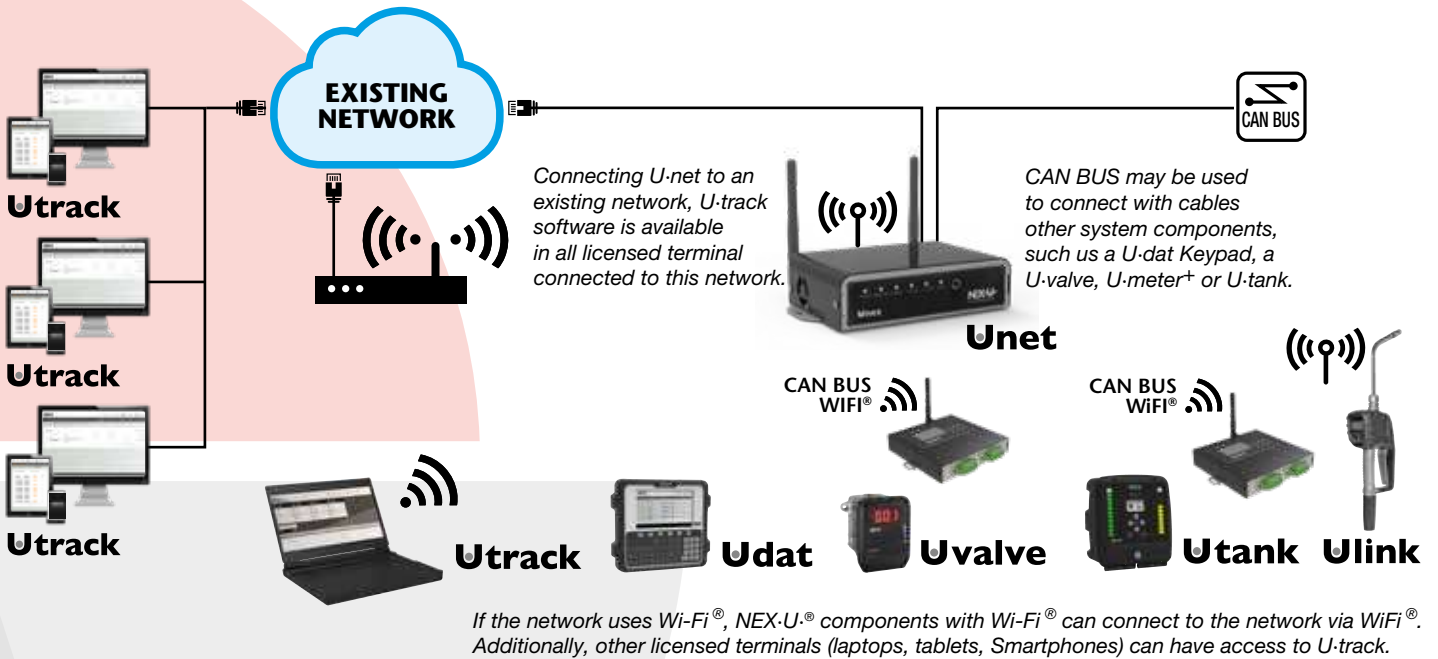
# CREATING A WIRELESS NETWORK

There are two ways to create a wireless network:

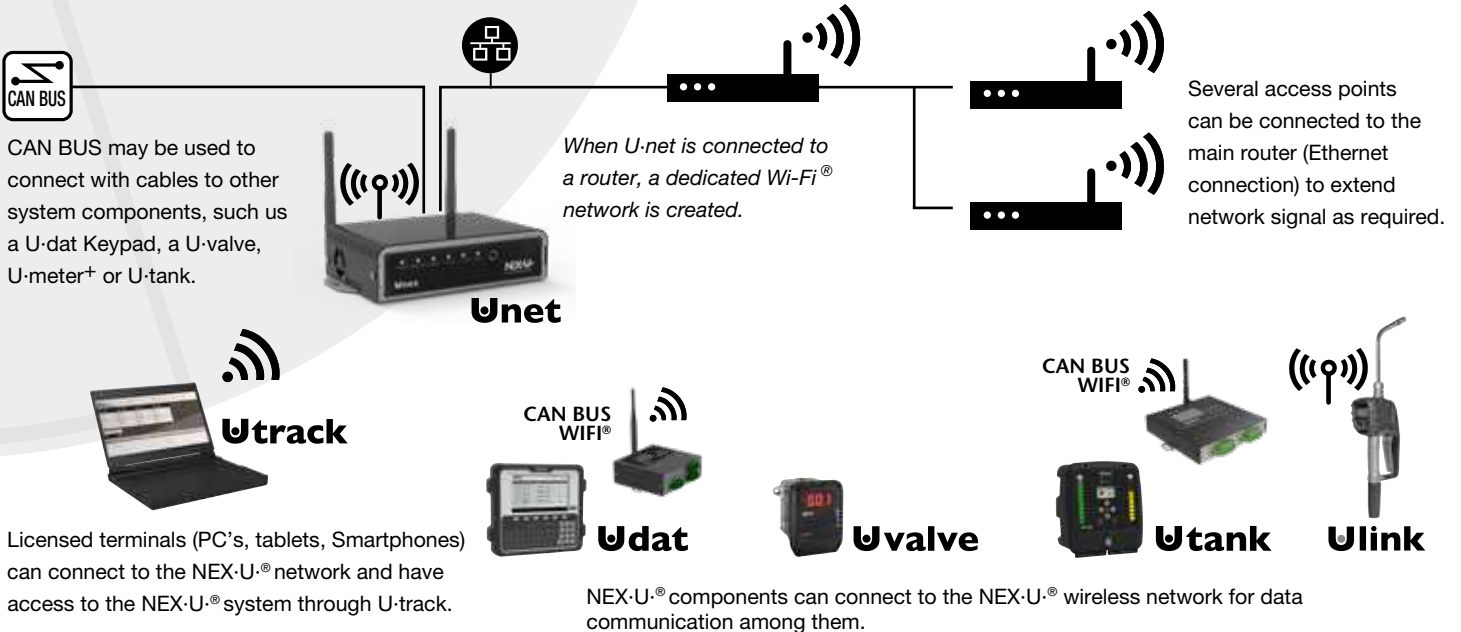
- Using an existing Wi-Fi® network. Requires access to existing wireless network credentials.
- Creating a dedicated Wi-Fi® network. New wireless credentials are created for this network.

In both cases IP addresses, network and default gateway, are required. The key component is U-net.

## USING AN EXISTING NETWORK



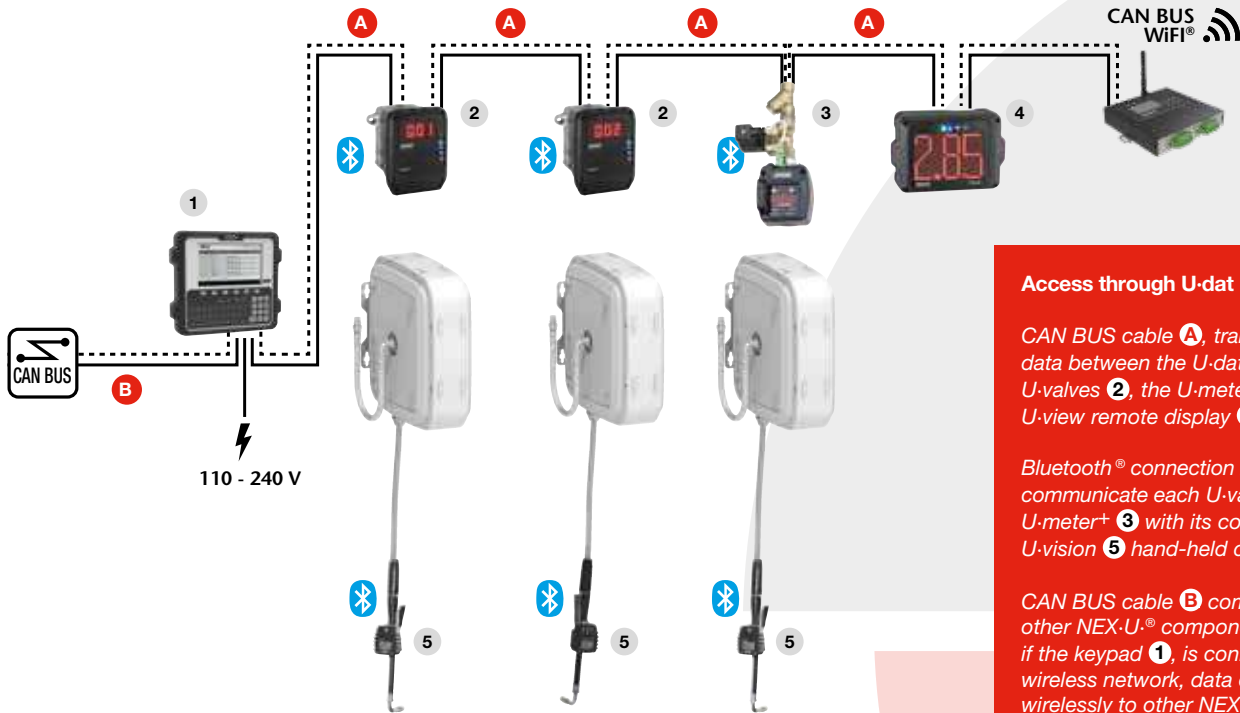
## CREATING A NEW NETWORK



# INSTALLATION EXAMPLES

NEX-U.® provides maximum flexibility in the way the user interacts with the system, the most effective connection method and enhanced reporting capability.

## ACCESS THROUGH U·dat



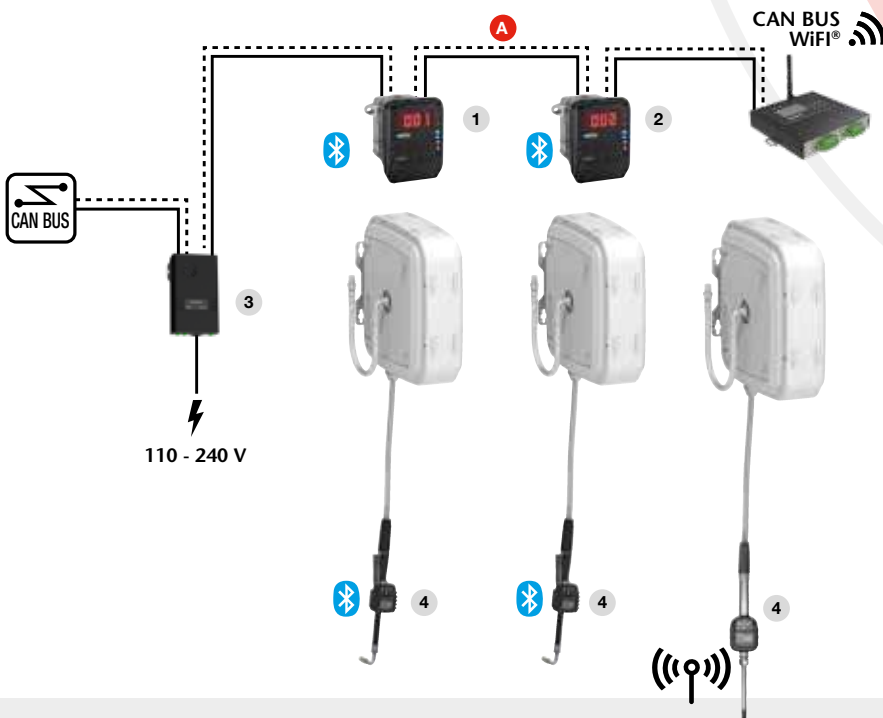
**Access through U·dat**

CAN BUS cable **A**, transmits power and data between the U·dat Keypad **1**, the U·valves **2**, the U·meter+ **3** and the U·view remote display **4**.

Bluetooth® connection is used to communicate each U·valve **2** and U·meter+ **3** with its corresponding U·vision **5** hand-held display.

CAN BUS cable **B** communicates with other NEX-U.® components. Alternatively, if the keypad **1**, is connected to the wireless network, data can be transmitted wirelessly to other NEX-U.® components.

## ACCESS THROUGH U·vision+ or U·link



**Access through U·vision+**

Power and data are transmitted using CAN BUS cable **A** between the U·valve+ **1** and the other U·valve **2**. Power to energize the solenoid valves is supplied by the U·power **3**, connected to U·valve+ **1**.

Each U·valve+ **1** and U·valve **2** is connected to its corresponding U·vision+ **4**, hand-held display and systems access keypad.

Wireless data transmission is done by U·valve+ **1**.

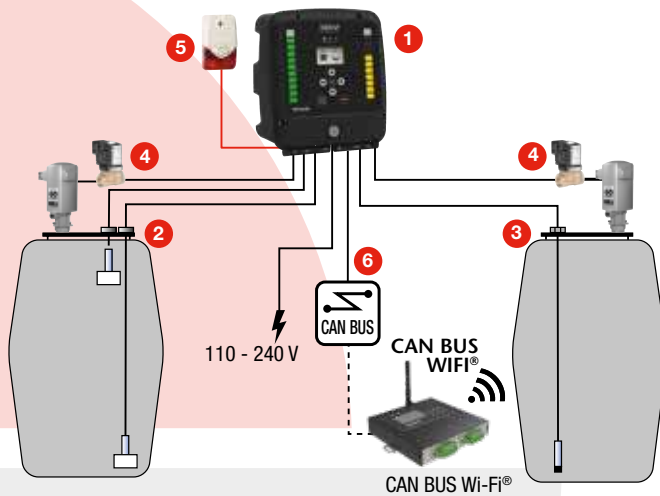


# TANK MONITORING



## CAN BUS FAST CONNECTION

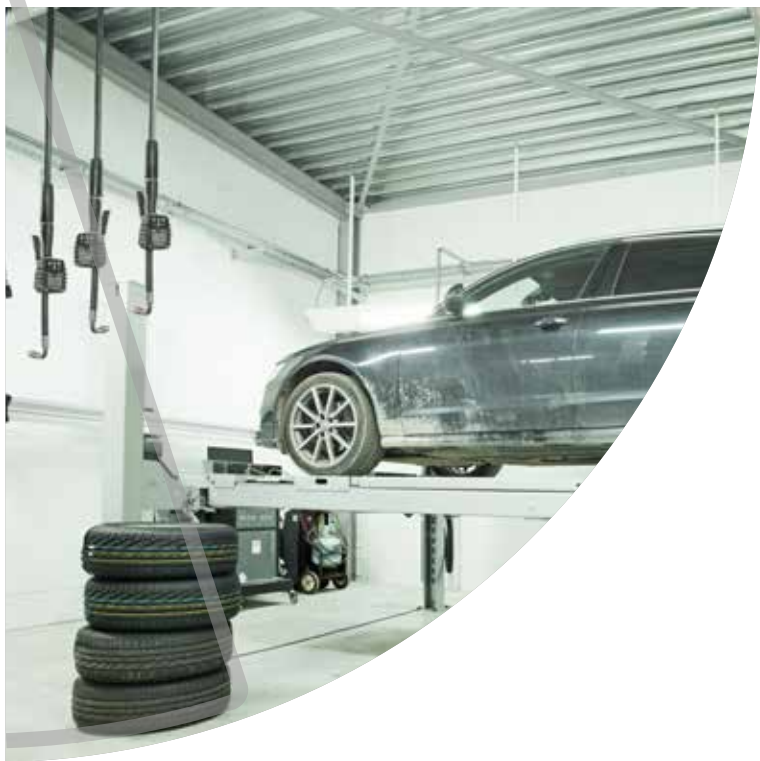
*U-dat, U-valve, U-meter, U-count, U-tank and U-net use in/out CAN BUS fast connectors that make cabling easier, quicker and prevent disconnections.*



*U-tank 1 can monitor up to two tanks. Each tank can be fitted with low and high level sensors 2 or with a pressure gauge 3 for real-time control of the inventory in the tank. U-tank 1 can also control pump operation opening or closing an air solenoid valve 4 that prevents pump from running dry or air entering the oil distribution lines if there is no oil in the tanks.*

*U-tank 1 can also control a remote flash light or siren 5 to warn when any tank is empty. U-tank 1 can communicate with other NEX:U.® elements using Wi-Fi® or through CAN BUS 6 wired connection.*







普朗科(北京)科技有限公司  
Plantcare(Beijing)Co.,Ltd.

Add: 北京市朝阳区高碑店西店海棠园16楼4-303  
Tel: +86 10 85777020

Phone: +86 18611525353  
Email: wuhm@plantcare.com.cn  
www.plantcare.com